



Frequently Asked Questions

Why were these streets selected for improvement?

- The streets within the Downtown Street Project were chosen because they were built over 100 years ago.
- Public Works has been performing maintenance activities such as pothole repairs, but the base of these streets is failing.
- When the base has failed, it doesn't matter what you do to the top - the cracks will keep coming through.
- The city has not rebuilt these streets sooner because the work is very expensive and have had to save money while also maintaining other city streets.
- The projects will also require improvements to the storm and water systems.

How is each street going to be impacted?

- The improvements will require the roadway section to be fully reconstructed down to the dirt.
- The roadway will be reconstructed with new curb & gutter and will replace driveway aprons, but the existing sidewalk will remain.
- All curb ramps will be updated to current Americans with Disabilities Act (ADA) standards.
- New storm drain lines and catch basin structures will be added or replaced to improve runoff collection and conveyance.
- Older water mains will be upgraded and replaced.
- Many of the streets predate current design standards and will have to be widened to meet minimum fire access needs.
- Roadway widening will require tree removal, but efforts will be made to mitigate these impacts.
- Street trees that must be removed will be replaced when possible.
- On street parking will be maintained with the new design but will be impacted in isolated areas to accommodate curb extensions at intersections and where curb bump outs may be added to preserve significant trees.

How will the neighborhood be impacted?

- The roadway reconstruction and utility improvements are too expensive to build at once.
- The city intends to design and reconstruct the roadways in phases as funding is available.
- The city is evaluating the required roadway and utility improvements to recommend an approach to phasing that impacts each block and intersection only once with each project.
- Construction will likely require periodic road closures to through traffic, but local access will be provided for residents.
- The roadway network in the neighborhood offers many simple options for detours during construction.

What will be the first set of streets receiving improvements?

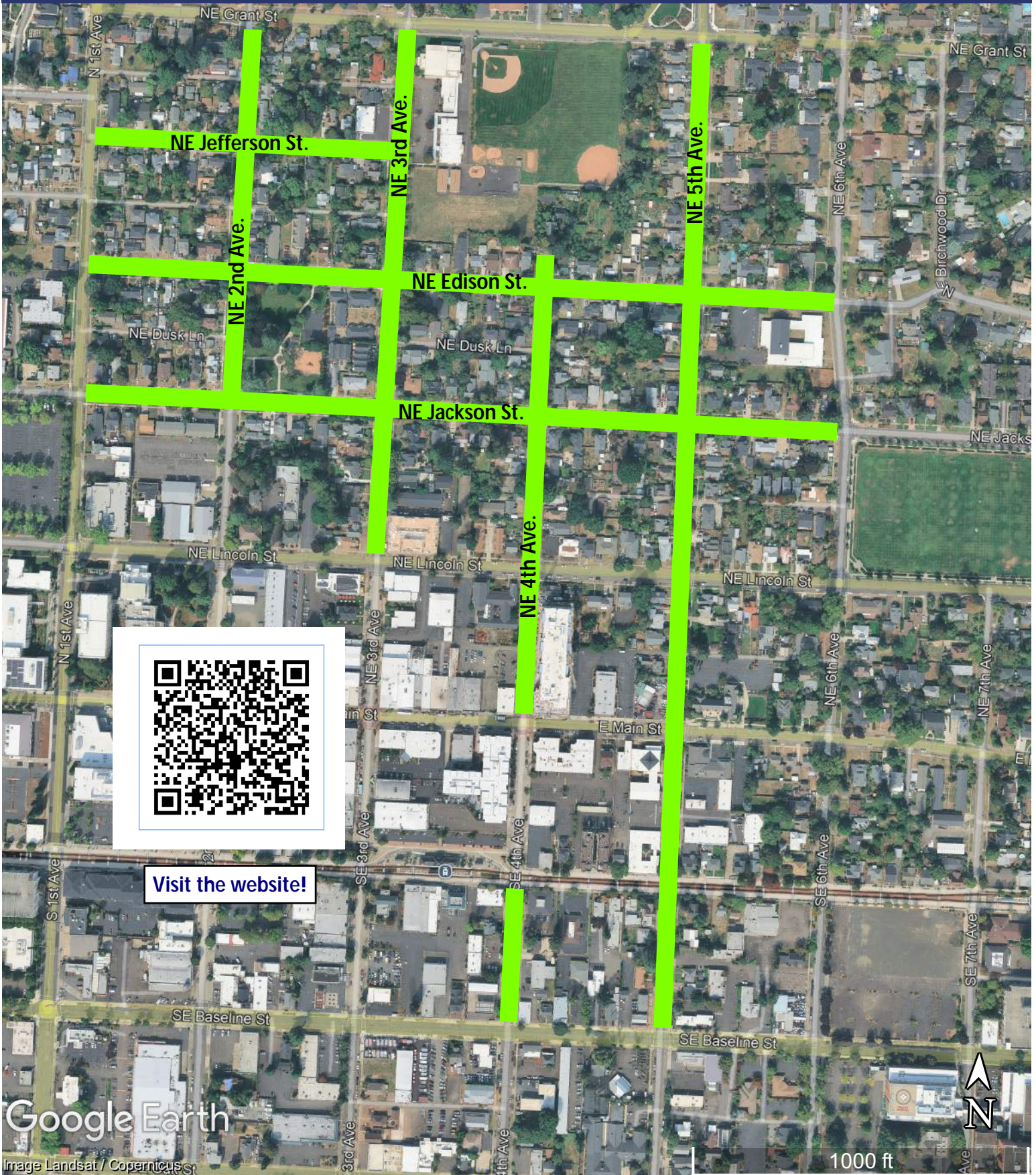
- The 2nd Avenue Reconstruction Project was prioritized due to the poor pavement conditions.
- A new public storm main will be extended to serve the 2nd Avenue project where none exists today.

What is the timeline?

- 2nd Avenue reconstruction currently anticipated to start Summer 2027.
- Subsequent projects will likely be delivered over the next 15 to 20 years.

DOWNTOWN STREETS

Pavement Management Program



Visit the website!

Google Earth

Image Landsat / Copernicus

1000 ft

