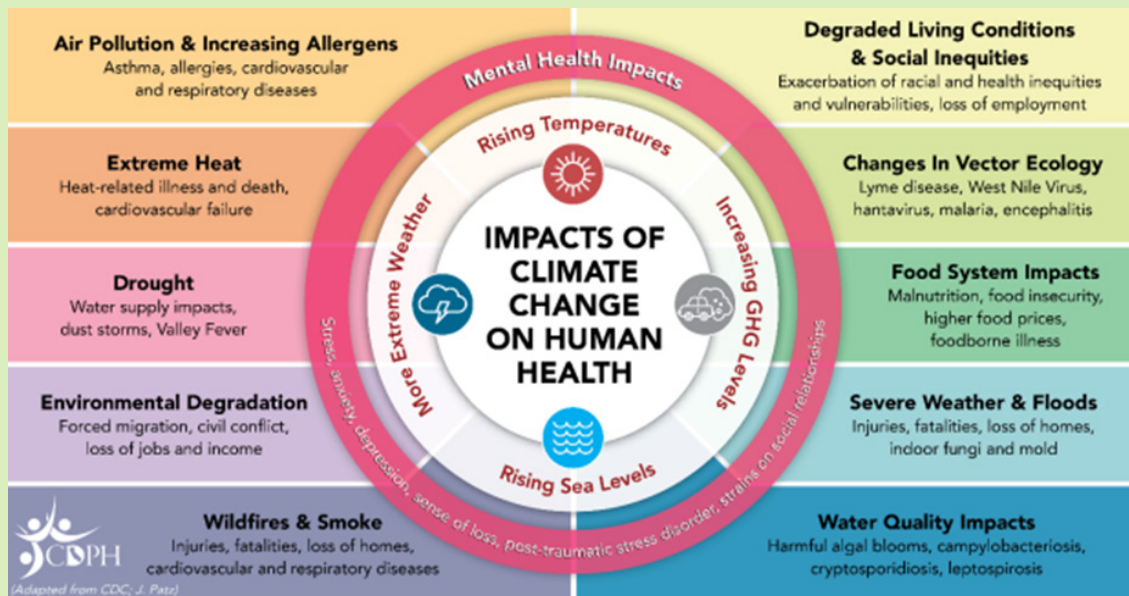
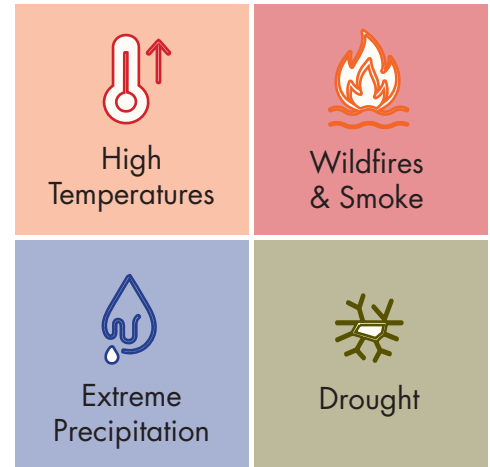


Climate Resiliency Plan Overview

The [Climate Resiliency Plan](#) is a comprehensive evaluation of the potential impacts of climate change on the region. It includes a detailed understanding of the climate risks that Hillsboro may face in the coming decades, the potential impacts associated with these risks, and actions to increase climate resiliency in the community. The impacts, probability, difficulty to mitigate, and risk ratings are included in the plan.

Each of the climate risks can impact the ability of humans, animals and plants to thrive. Therefore, the plan includes proposed strategies to help the community adapt to the new conditions and mitigate the impacts of the risks.

Climate Risks in Hillsboro



Source: *Climate and Health in Oregon 2023 Report*, Oregon Health Authority

Climate Resiliency Actions

Hillsboro is proactively addressing the challenges posed by climate change and building long-term resilience. This helps protect public health, preserve natural resources, and safeguard local economies from climate-related disruptions. The plan will support infrastructure upgrades, disaster preparedness, and sustainable development, ensuring that the City can adapt to extreme weather events and environmental changes. The following strategies are recommended in the [Climate Resiliency Plan](#).

Social resiliency includes actions to help make people safer and thrive in our community. Short-term strategies could be completed in less than five years and long-term actions would take five or more years.

Short-term

- Adopt fire resilience standards
- Develop anti-displacement plan for residents
- Support affordable energy rates
- Provide renter and homeowner insurance education
- Develop funding alternatives for home improvements
- Develop climate change expertise at the City
- Create evacuation plans and outreach
- Education about staying safe in all weather
- Strengthen community partnerships
- Enhance community empowerment for safety
- Enhance Community Emergency Response Team (CERT)
- Protect significant historical sites impacted by climate change
- Establish a native plant nursery and seed bank
- Provide education on battery risks

Long-term

- Buildings safe for people during power outage
- Weather-proof and preserve existing homes
- Upgrade the energy efficiency of buildings
- Boost public alerts and early warning systems
- Support mental health services
- Develop resilience hubs

Infrastructure resiliency includes actions to help protect the buildings, roads and energy systems in the community. Short-term strategies could be completed in less than five years and long-term actions would take five or more years.

Short-term

- Support drought-resilient strategies
- Gather data for hazard events
- Expedite management of debris post-disaster
- Map roads vulnerable to natural hazards
- Develop parks and open space climate strategy
- Adopt the Urban Forestry Master Plan
- Save water resources through smart practices
- Reduce human risks from environmental disease (i.e., ticks, mosquitos)
- Provide information about wildfire prevention
- Support agricultural climate adaptation
- Protect health of outdoor workers
- Expand local food security and food economy
- Protect agricultural and forested lands
- Support reclaimed water systems
- Prevent the spread of invasive plants and animals
- Create a natural resource management plan

Long-term

- Support local systems, like solar and batteries
- Improve energy infrastructure safety and reliability
- Develop an urban heat resilience strategy
- Improve street connectivity and walkability
- Ensure all community members have access to green space
- Develop a climate migration response plan

The recommended actions and strategies are detailed in the [Climate Resiliency Plan](#).